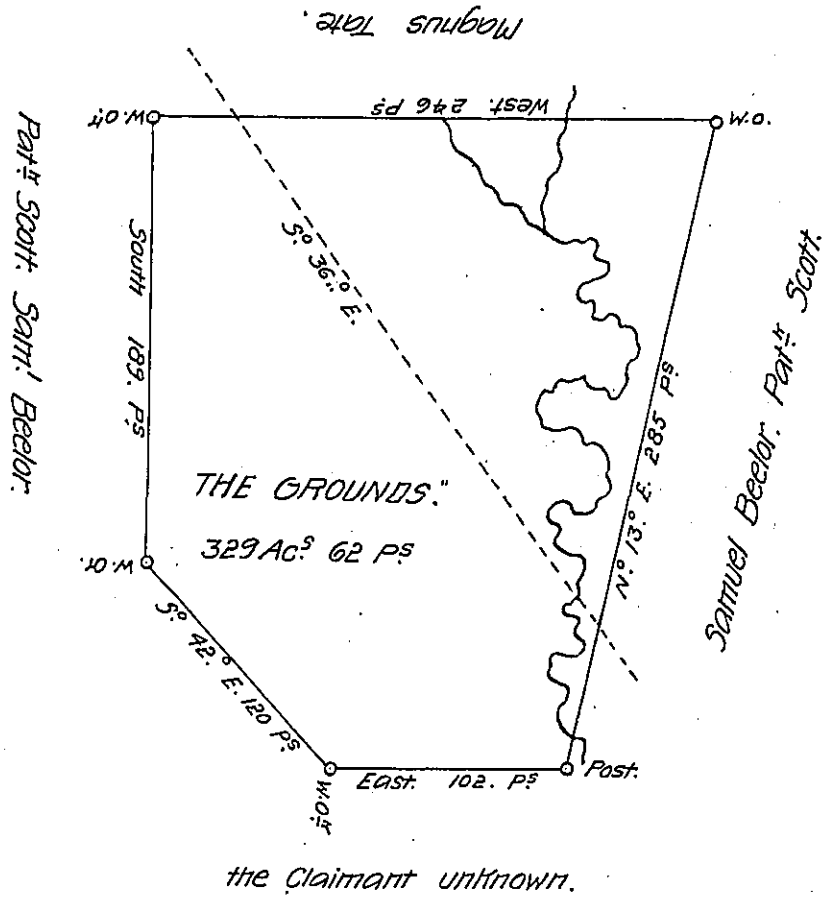


Appropriated

Don't Use.



A Draught of a Survey called The Grounds situate on the Waters of Travis Cr. in Washington County, contain<sup>g</sup> 329 A<sup>s</sup> 62 P<sup>s</sup> and the usual Allowance for Highways &c. executed Nov<sup>r</sup> 29<sup>th</sup> 1786 in Pursuance of a Warrant granted to John Rice Connel for 300 A<sup>s</sup> dated Feb<sup>r</sup> 28. 1786. Note. The dotted Line (S. 36° E) is said to be a dividing Line between two Surveys made on Warr<sup>ts</sup> in the Names of Benj<sup>m</sup> Beeler and Jn<sup>o</sup> Howlett.

Presley Nevill.  
Matt<sup>r</sup> Fitchie } D.S's

Jn<sup>o</sup> Lutgens Esq. S. Genl

IN TESTIMONY that the above is a copy of the original remaining on file in the Department of Internal Affairs of Pennsylvania, made conformably to an Act of Assembly approved the 16th day of February, 1833, I have hereunto set my Hand and caused the Seal of said Department to be affixed at Harrisburg, this twentieth day of March 1908.

*Henry Fowler*  
Secretary of Internal Affairs.